

Renzo Guerrini and Elena Parrini

Pediatric Neurology and Neurogenetics Unit and Laboratories, Neuroscience Department, A. Meyer Children's Hospital, University of Florence, Florence, Italy

Abbreviations:

a>p:	anterior>posterior
p>a:	posterior>anterior
PMG:	Polymicrogyria
BFPP:	Bilateral frontoparietal PMG
BPP:	Bilateral perisylvian PMG
CNV:	copy number variants
EEG:	Electroencephalogram
ILS:	isolated LIS
LIS:	Lissencephaly
MCD:	Malformations of cortical development
MLPA:	Multiplex Ligation-dependent Probe Amplification
MRI:	Magnetic resonance imaging
MDS:	Miller-Dieker syndrome

Summary

The malformations of cortical development (MCD) represent a major cause of developmental disabilities, severe epilepsy and reproductive disadvantage. Genes that have been associated to MCD are mainly involved in cell proliferation and specification, neuronal migration and late cortical organization. Lissencephaly-pachygyria-severe band heterotopia are diffuse neuronal migration disorders (NMDs) causing severe, global neurological impairment. Abnormalities of the *LIS1*, *DCX*, *ARX*, *RELN* genes have been associated with these malformations. Recent work has also established a relationship of lissencephaly, with or without associated microcephaly, corpus callosum dysgenesis and cerebellar hypoplasia and, at times, a morphological pattern consistent with polymicrogyria with mutations of several genes (*KIF2A*, *KIF5C*, *TUBA1A*, *TUBA8*, *TUBB*, *TUBB2B*, *TUBB3*, *TUBG1* and *DYNC1H1*) regulating the synthesis and function of microtubule and centrosome key components and hence defined as tubulinopathies. MCDs only affecting subsets of neurons, such as mild subcortical band heterotopia and periventricular heterotopia, cause neurological and cognitive impairment that vary from severe to mild deficits. They have been

associated with abnormalities of the *DCX*, *FLN1A*, and *ARFGEF2* genes. Polymicrogyria results from abnormal late cortical organization and is inconstantly associated with abnormal neuronal migration. Localised polymicrogyria has been associated with anatomically specific deficits, including disorders of language and higher cognition. Polymicrogyria is genetically heterogeneous and only in a small minority of patients has a definite genetic cause been identified. Megalencephaly with normal cortex by imaging, megalencephaly with polymicrogyria, dysplastic megalencephaly (including hemimegalencephaly) and focal cortical dysplasia can all result from mutations of the same genes in the PI3K-AKT pathway which are often post-zygotic and can be limited to the dysplastic tissue in the less diffuse forms.

Epileptologie 2015; 32: 129 – 138

Keywords: Malformations of cortical development, lissencephaly, subcortical band heterotopia, periventricular nodular heterotopia, polymicrogyria, gene, mutation

Malformations du développement cortical (MDC) : aspects génétiques

Les malformations du développement cortical (MDC) représentent une cause majeure de troubles du développement, d'épilepsie sévère et de désavantage reproductif. Les gènes associés aux MDC sont principalement impliqués dans la prolifération et la spécification cellulaire, la migration neuronale et l'organisation corticale tardive. Les hétérotopies en bandes, comme la lissencéphalie-pachygyrie sévère, constituent des troubles diffus de la migration neuronale (TDMN) entraînant un handicap neurologique sévère et global. Des anomalies des gènes *LIS1*, *DCX*, *ARX*, *RELN* ont été associées à ces malformations. Un travail récent a aussi établi une relation entre lissencéphalie, avec ou sans microcéphalie associée, dysgénésie du corps callosus et hypoplasie cérébelleuse et, parfois, un aspect

morphologique compatible avec eine polymicrogyrie qui s'accompagne de la mutation de plusieurs gènes (KIF2A, KIF5C, TUBA1A, TUBA8, TUBB, TUBB2B, TUBB3, TUBG1 et DYNC1H1) régulant la synthèse et la fonction des composants clés des microtubules et des centrosomes, définis dorénavant comme tubulinopathies. Les MCD qui touchent simplement un sous-groupe de neurones, comme par exemple une hétérotopie sous corticale en bandes légère et une hétérotopie périventriculaire, provoquent des troubles neurologiques et cognitifs entraînant de façon variable des déficits sévères ou légers. Ceux-ci ont été associés à des anomalies des gènes DCX, FLN1A, et ARFGF2. La polymicrogyrie provient d'une organisation corticale tardive anormale et est liée inconstamment à une migration neuronale pathologique. Une polymicrogyrie localisée a été associée à des déficits anatomiques spécifiques, y compris des troubles du langage et des fonctions cérébrales hautes. La polymicrogyrie est génétiquement hétérogène et seul un petit nombre de patients présente une cause génétique définie identifiée. La mégalencéphalie accompagnant un cortex normal à l'imagerie, la mégalencéphalie accompagnée de polymicrogyrie, la mégalencéphalie dysplasique (y compris l'hémimégalencéphalie) et la dysplasie corticale focale peuvent provenir de mutations des mêmes gènes de la voie PI3K-AKT et sont souvent post-zygotiques ; de plus, ces anomalies peuvent être limitées aux tissus dysplasiques dans les formes moins diffuses.

Mots clés : Malformations du développement cortical, lissencéphalie, hétérotopie sous corticale en bandes, hétérotopie nodulaire périventriculaire, polymicrogyrie, gène, mutation

Fehlbildungen der Kortextentwicklung: genetische Aspekte

Fehlbildungen der Kortextentwicklung (engl. Malformations of Cortical Development, MCD) bilden eine wichtige Ursache für Entwicklungsstörungen, schwere Epilepsie und reproduktive Benachteiligung. Die mit MCD assoziierten Gene sind hauptsächlich an der Zellproliferation und -differenzierung, an der neuronalen Migration und an der späten kortikalen Organisation beteiligt. Lissenzephalie, Pachygyrie und schwere Bandheterotopie beruhen auf diffusen neuronalen Migrationsstörungen (engl. Neuronal Migration Disorders, NMDs), die zu schweren allgemeinen neurologischen Beeinträchtigungen führen. Diese Fehlbildungen sind mit Anomalien der Gene LIS1, DCX, ARX, RELN assoziiert. In neueren Arbeiten wurde ausserdem für Lissenzephalie (mit oder ohne assoziierte Mikrozephalie), Balkendysgenese, zerebelläre Hypoplasie sowie bisweilen auch für Polymikrogyrie-typische morphologische Auffälligkeiten ein Zusammenhang mit Mutationen mehrerer Gene nachgewiesen (KIF2A, KIF5C, TUBA1A,

TUBA8, TUBB, TUBB2B, TUBB3, TUBG1 und DYNC1H1), welche die Synthese und Funktion von Schlüsselkomponenten der Mikrotubuli und des Zentrosoms regulieren, weshalb man hier von Tubulinopathien spricht. MCDs, die lediglich Untergruppen von Neuronen betreffen, z. B. die leichte subkortikale Bandheterotopie und die periventriculäre Heterotopie, verursachen neurologische und kognitive Beeinträchtigungen, die von leichten Defiziten bis hin zu schweren Ausfällen reichen, und sind mit Anomalien der Gene DCX, FLN1A und ARFGF2 assoziiert. Eine Polymikrogyrie ist die Folge einer gestörten späten kortikalen Organisation und wird bisweilen mit einer neuronalen Migrationsstörung in Zusammenhang gebracht. Die fokale Polymikrogyrie geht mit den für den jeweiligen anatomischen Sitz spezifischen Ausfällen einher, unter anderem mit Sprechstörungen und Störungen der höheren kognitiven Prozesse. Bei der Polymikrogyrie handelt es sich um eine genetisch heterogene Störung, für die nur bei einem kleinen Teil der Patienten eine eindeutige genetische Ursache festgestellt werden konnte. Megalenzephalien mit bilddiagnostisch unauffälligem Kortex, Megalenzephalien mit Polymikrogyrie, dysplastische Megalenzephalien (einschliesslich Hemimegalenzephalie) und fokale kortikale Dysplasien können alle aus Mutationen derselben Gene im PI3K-Akt-Signalweg resultieren. Diese Mutationen treten häufig postzygotisch auf und können bei den weniger diffusen Formen auf das dysplastische Gewebe beschränkt sein.

Schlüsselwörter: Fehlbildungen der Kortextentwicklung, Lissenzephalie, subkortikale Bandheterotopie, periventriculäre noduläre Heterotopie, Polymikrogyrie, Gen, Mutation

Introduction

The development of the human cerebral cortex is a complex dynamic process that occurs during several gestational weeks [1]. During the first stage, stem cells proliferate and differentiate into young neurons or glial cells deep in the forebrain, in the ventricular and subventricular zones lining the cerebral cavity. During the second stage, cortical neurons migrate away from their place of origin: most cells migrate, along the radial glial fibres from the periventricular region towards the pial surface, where each successive generation passes one another and settles in an inside-out pattern within the cortical plate. When neurons reach their destination, they stop migrating and order themselves into specific "architectonic" patterns guiding cells to the correct location in the cerebral cortex. This third phase involves final organization within the typical six layers of cortex, associated with synaptogenesis and apoptosis.

Abnormal cortical development is increasingly recognized as a cause of developmental disabilities and epilepsy. This recognition is due, in part, to the

improved use of magnetic resonance imaging (MRI), which makes it possible to assess the distribution and depth of cortical sulci, cortical thickness, the boundaries between gray and white matter, and variations in signal intensity. Abnormalities of any or all of these features may be observed in different malformations of cortical development (MCD), which may be restricted to discrete cortical areas or may, alternatively, be diffuse [2, 3].

So far, more than 100 genes are reported to be associated with one or more types of MCD. The biological pathways include cell-cycle regulation at many steps (especially mitosis and cell division), apoptosis, cell-fate specification, cytoskeletal structure and function, neuronal migration and basement-membrane function, and many inborn errors of metabolism. Importantly, a subset of MCD genes – especially those associated with megalencephaly – are associated with postzygotic (ie, mosaic) mutations [4].

Genetic testing needs accurate assessment of imaging features, and familial distribution, if any, and can be straightforward in some disorders but requires a complex diagnostic algorithm in others. Because of substantial genotypic and phenotypic heterogeneity for most of these genes, a comprehensive analysis of clinical, imaging, and genetic data is needed to properly define these disorders. Exome sequencing and high-field MRI are rapidly modifying the classification of these disorders.

In the following sections we will discuss the most frequent MCD.

Lissencephaly and subcortical band heterotopia

Lissencephaly (LIS) is characterized by absent (agyria) or decreased (pachygyria) convolutions, cortical thickening and a smooth cerebral surface [3, 5]. Several types of LIS have been recognized. The most common, classical LIS, features a very thick cortex (10-20 mm vs. the normal 4 mm) and no other major brain malformations.

Subcortical band heterotopia (SBH) is a related disorder in which bands of gray matter are interposed in the white matter between the cortex and the lateral ventricles [6]. Histopathology demonstrates that heterotopic neurons settle close to the ‘true’ cortex in a pattern suggestive of laminar organization.

On the basis of findings from genetic studies, the full range of lissencephaly now extends from severe lissencephaly with cerebellar hypoplasia to classic lissencephaly to subcortical band heterotopia, and also includes a polymicrogyria-like cortical malformation that can be distinguished from both lissencephaly and typical polymicrogyria by high-resolution brain imaging.

Genetic basis and diagnosis

Lissencephaly, subcortical band heterotopia, and lissencephaly with cerebellar hypoplasia are always genetic. Studies to date have identified 12 lissencephaly genes (Table 1), which account for roughly 90% of patients. However, two major genes have been associated with classical LIS and SBH. The *LIS1* gene is responsible for the autosomal form of LIS [7], while the *DCX* gene is X-linked [8]. Although either gene can result in either LIS or SBH, most cases of classical LIS are due to deletions or mutations of *LIS1* [7], whereas most cases of SBH are due to mutations of *DCX* [8]. *LIS1*-related LIS is more severe in the posterior brain regions (p>a gradient) (Figure 1A), whereas *DCX*-related LIS is more severe in the anterior brain (a>p gradient) (Figure 1B).

About 60% of patients with p>a isolated LIS (ILS) carry genomic alterations or mutations involving *LIS1* [9]. A simplified gyral pattern in the posterior brain, with underlying SBH, has been associated with mosaic mutations of *LIS1* [7]. Miller-Dieker syndrome (MDS) is caused by deletion of *LIS1* and contiguous genes and features severe p>a LIS, accompanied by distinct dysmorphic facial features and additional malformations (Figure 1C) [7].

Most *DCX* mutations cause a>p SBH/pachygyria. Mutations of *DCX* have been found in all reported pedigrees and in 80% of sporadic females and 25% of sporadic males with SBH [8]. Genomic deletions of *DCX* are rarely observed [6]. Maternal germline or mosaic *DCX* mutations may occur in about 10% of cases of either SBH or XLIS [10]. Hemizygous males with *DCX* mutations have classical LIS (Figure 1D), but rare boys with missense mutations and SBH have been described [11].

Phenotype

Classical LIS is rare, with a prevalence of about 12 per million births. Patients with severe LIS have early developmental delay, early diffuse hypotonia, later spastic quadriplegia, and eventual severe or profound mental retardation. Seizures occur in over 90% of LIS children, with onset before 6 months in about 75% of cases. Between 35% and 85% of children with classic lissencephaly develop infantile spasms, often without classic hypsarrhythmia. Most LIS children subsequently have multiple seizure types. In patients with MDS, classical LIS is accompanied by distinct dysmorphic facial features [7]. The main clinical manifestations of SBH are mental retardation and epilepsy. Epilepsy is present in almost all patients and is intractable in about 65% of cases. About 50% of these epilepsy patients have focal seizures, and the remaining 50% have generalized epilepsy, often within the spectrum of Lennox-Gastaut syndrome [6].

Children with some lissencephaly syndromes (especially Miller-Dieker syndrome, and severe forms of lis-

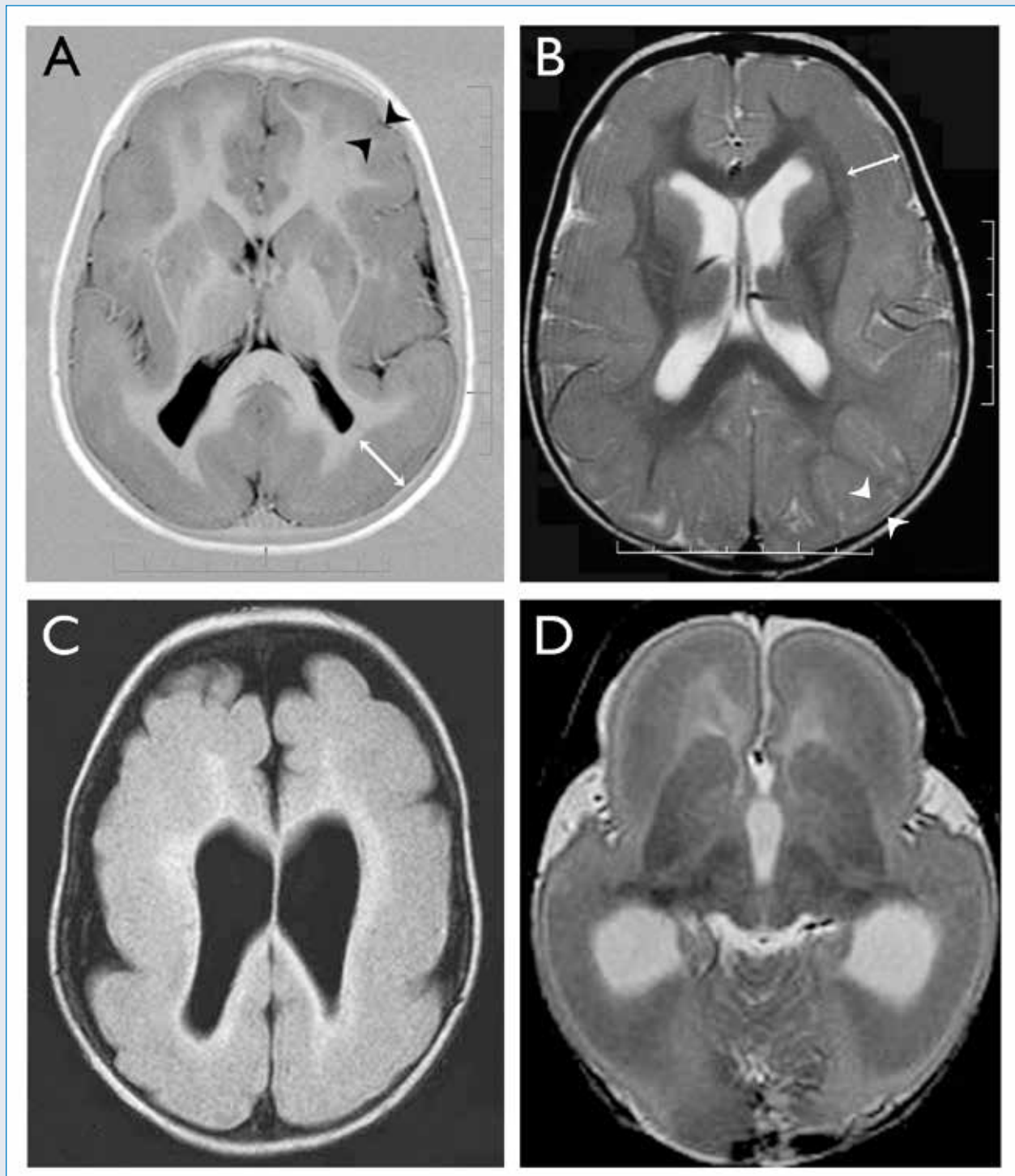


Figure 1: Brain MRI of four different patients; axial sections: (A) classical LIS in a boy with *LIS1* gene mutation; (B) LIS in a girl with *DCX* mutation. In (A), there is a p>a gradient, cortical thickness is around 6mm in the frontal lobes (two black arrowheads) and around 3 mm in the posterior brain (white arrow). In (B), there is a typical a>p pattern; cortical thickness is around 2 cm in the frontal lobes (white arrow) and around 4mm in the posterior brain (two white arrowheads). (C) LIS in a patient with MDS. (D) Severe diffuse LIS with relatively small frontal lobes in a boy with *DCX* mutation.

sencephaly with cerebellar hypoplasia or the X-linked syndrome of lissencephaly with abnormal genitalia) have a severe course and high mortality rates. However, these data do not apply to children with less severe forms of lissencephaly, subcortical band

heterotopia, or lissencephaly with cerebellar hypoplasia, because all of these disorders are associated with better motor and cognitive function and longer survival [12].

Laboratory Investigations

In patients with classical LIS, the cytogenetic and molecular investigations are part of the diagnostic process. When MDS is suspected, a standard karyotype and FISH for the 17p13.3 region is indicated. When isolated LIS is diagnosed, careful assessment of the antero-posterior gradient of cortical pattern abnormality will be suggestive of the involvement of either the *LIS1* or the *DCX* gene. When LIS is more severe posteriorly, it is worth performing first MLPA in order to rule out *LIS1* deletions/duplications. If a deletion/duplication is not found, *LIS1* sequencing should then be performed. In boys whose MRI shows more severe pachygyria in the frontal lobes, sequencing of the *DCX* gene is indicated. In patients with SBH direct sequencing of *DCX* should be performed. If a *DCX* mutation is not found, MLPA analysis should then be performed. Direct sequencing is also indicated in the mothers of patients harbouring a *DCX* mutation or other female relatives.



Figure 2: Brain MRI: Axial section. Typical, classical bilateral PNH in a woman with a missense *FLNA* mutation. Bilateral nodules of subependymal heterotopia are contiguous and rather symmetric, extensively lining the ventricular walls (black arrows).

Genetic counselling

All reported *LIS1* alterations are *de novo*. Given the theoretical risk of germline mosaicism in either parent (which has never been demonstrated for *LIS1*), a couple with a child with lissencephaly is usually given a 1% recurrence risk.

When a *DCX* mutation is found in a boy with LIS, mutation analysis of *DCX* should be extended to the proband's mother, even if her brain MRI is normal. If the mother is a mutation carrier, the mutation will be transmitted according to Mendelian inheritance. If the mother is not a carrier, she can still be at risk of germline mosaicism; the risk of transmitting the mutation might roughly be estimated at around 5%.

Heterotopia

There are three main groups of heterotopia: periventricular (usually nodular: PNH), subcortical and leptomeningeal, of which only the first two can be detected by imaging. PNH is by far the most frequent. SBH is a mild form of LIS and classified in that group.

Periventricular nodular heterotopia (PNH)

PNH consists of nodules of gray matter located along the lateral ventricles with a total failure of migration of some neurons [3, 5]; it ranges from isolated, single, to confluent bilateral nodules (Figure 2). The overlying cortex may show an abnormal organization. When the nodules are bilateral and numerous, a genetic basis is probable and other brain malformations are often reported [13].

Genetic basis and diagnosis

PNH is a clinically and genetically heterogeneous disorder occurring most frequently in women as an X-linked trait (classical bilateral PNH), associated with high rates of prenatal lethality in male fetuses, and 50% recurrence risk in the female offspring. Almost 100% of families and 26% of sporadic patients, harbor mutations of the *FLNA* gene [13], which also causes cardiovascular abnormalities in some patients of both sexes and gut malformations in boys. Only a few living male patients with PNH owing to *FLNA* mutations have been reported [14].

A rare recessive form of PNH owing to mutations of the *ARFGEF2* gene was described in two consanguineous pedigrees [15] in which affected children had microcephaly, severe delay, and early-onset seizures.

Other genetic forms of periventricular nodular heterotopia have been mapped to several chromosomal loci (Table 1), but a putative causal gene has only been identified for the 6q27-related form [16].

Table 1: Genes and chromosomal loci associated with MCDw

Cortical malformation	Pattern of inheritance	Gene	Locus	OMIM
Lissencephaly (LIS)				
MDS	AD	<i>LIS1</i>	17p13.3	*601545
ILS or SBH	AD	<i>LIS1</i>	17p13.3	*601545
ILS or SBH	X-linked	<i>DCX</i>	Xq22.3-q23	*300121
ILS or SBH	AD	<i>TUBA1A</i>	12q12-q14	*602529
XLAG	X-linked	<i>ARX</i>	Xp22.13	*300382
LIS cerebellar hypoplasia	AR	<i>RELN</i>	7q22	*600514
LIS cerebellar hypoplasia	AR	<i>VLDR</i>	9p24.2	*192977
ILS	AD	<i>DYNC1H1</i>	14q32.31	*600112
ILS	AD	<i>KIF2A</i>	5q12.1	*602591
ILS	AD	<i>TUBA1A</i>	17q13.12	*602529
ILS	AD	<i>TUBB2B</i>	6p25.2	*612850
ILS	AD	<i>TUBG1</i>	17q21.2	*191135
Periventricular nodular heterotopia (PNH)				
Classical bilateral PNH	X-linked	<i>FLNA</i>	Xq28	*300017
Ehlers-Danlos syndrome and PNH	X-linked	<i>FLNA</i>	Xq28	*300017
Facial dysmorphism, severe constipation and PNH	X-linked	<i>FLNA</i>	Xq28	*300017
Fragile-X syndrome and PNH	X-linked	<i>FMR1</i>	Xq27.3	*309550
Microcephaly and PNH	AR	<i>ARFGEF2</i>	20q13.13	*605371
Donnai-Barrow syndrome and PNH	AR	<i>LRP2</i>	2q24-q31	*600073
PNH with limb abnormalities (limb reduction abnormality or syndactyly)	X-linked	...	Xq28	
Williams syndrome and PH	AD	...	7q11.23	
PH	AD	...	5p15.1	
PH	AD	...	5p15.33	
Agnesis of the corpus callosum, polymicrogyria and PNH	AD	...	6q27(C6orf70)	
PH	AD	...	6p25	
PH	AD	...	4p15	
PH	AD	...	5q14.3-q15	
PH	AD	...	22q11	
PH and steroid sulfatase deficiency	AD	...	Xp22.3	
PH	AD	...	Xp22.11	
PH and Smith-Magenis syndrome	AD	...	17p11.2	
Agnesis of the corpus callosum and PNH	AD	...	1p36.22-pter	
Polymicrogyria (PMG)				
Bilateral frontoparietal PMG	AR	<i>GPR56</i>	16q13	*604110
Asymmetric PMG	AD	<i>TUBB2B</i>	6p25.2	*612850
PMG and rolandic seizures, oromotor dyspraxia	X-linked	<i>SRPX2</i>	Xq21.33-q23	*300642
PMG and agnesis of the corpus callosum (ACC), microcephaly	AD	<i>TBR2</i>	3p21.3-p21.2	*604615
PMG and aniridia	AD	<i>PAX6</i>	11p13	*607108
PMG and microcephaly	AR	<i>NDE1</i>	16p13.11	*609449
PMG and microcephaly	AR	<i>WDR62</i>	19q13.12	*613583
PMG and fumaric aciduria	AR	<i>FH</i>	1q43	*136850
PMG and "band-like calcifications"	AR	<i>OCLN</i>	5q13.2	*602876
Perysylvian PMG and CHARGE syndrome	AD	<i>CHD7</i>	8q12.1-q12.2	*608892
PMG and Warburg Micro syndrome	AR	<i>RAB3GAP1</i>	2q21.3	*602536
PMG and Warburg Micro syndrome	AR	<i>RAB3GAP2</i>	1q41	*609275
PMG and Warburg Micro syndrome	AR	<i>RAB18</i>	10p12.1	*602207
PMG-like, microcephaly, ACC	AD	<i>DYNC1H1</i>	14q32.31	*600112
PMG-like, microcephaly, ACC	AD	<i>KIF5C</i>	2q23.1	*604593
PMG-like, microcephaly, ACC, CBLH	AD	<i>TUBA1A</i>	17q13.12	*602529
PMG-like, microcephaly, ACC, CBLH	AR	<i>TUBA8</i>	22q11.21	*605742
PMG-like, microcephaly, ACC, CBLH	AD	<i>TUBB3</i>	16q24.3	*602661
PMG-like, microcephaly, ACC, CBLH	AD	<i>TUBB</i>	6p21.33	*191130
PMG-like, microcephaly, ACC	AR	<i>EOMES</i>	3p24.1	*604615
PMG and Goldberg-Shprintzen syndrome	AR	<i>KIAA1279</i>	10q21.3	*609367
PMG	AD	...	1p36.3-pter	
PMG and microcephaly	AD	...	1q44-qter	
PMG and facial dysmorphism	AD	...	2p16.1-p23	
PMG and microcephaly, hydrocephalus	AD	...	4q21-q22	
PMG	AD	...	21q2	
PMG	AD	...	6q26-27	
PMG	AD	...	13q3	
PMG	AD	...	18p11	
PMG and Di George syndrome	AD	...	22q11.2	
Megalencephaly-polymicrogyria and dysplastic megalencephaly				
MPPH, DMEG	AD	<i>AKT3</i>	1q43q44	*611223
Weaver syndrome	AD	<i>EZH2</i>	7q36.1	*601573
MCAP	AD	<i>PIK3CA</i>	3q26.32	*171834
MPPH	AD	<i>PIK3R2</i>	19p13.11	*603157

AD: Autosomal dominant; AR: Autosomal recessive; ACC: agnesis of the corpus callosum; CBLH: diffuse cerebellar hypoplasia; MPPH: megalencephaly-polymicrogyria-polydactyly-hydrocephalus syndrome; DMEG: dysplastic megalencephaly; MCAP: megalencephaly-capillary malformation syndrome

Phenotype

Although most patients with PNH come to medical attention because they have focal epilepsy of variable severity, there is a wide spectrum of clinical presentations, including several syndromes with mental retardation and dysmorphic facial features. There is some correlation between the size of PNH and the likelihood of concomitant structural abnormality of the cortex and clinical severity [13] but there seem to be no correlation between the size and number of heterotopic nodules and cognitive outcome. Most female patients with PNH due to *FLNA* mutations have epileptic seizures, with normal or borderline cognitive level. However patients with even small isolated nodules caused by unknown genetic abnormalities or by copy number variations and severe cognitive impairment have been reported.

Laboratory Investigations

FLNA mutation analysis should be performed in patients with 'classical' bilateral PNH. When autosomal recessive PH associated with microcephaly is suspected, *ARFGEF2* mutation analysis should be performed. Patients with PH associated with other brain malformations or extraneurological defects, should be studied with array-CGH as genomic deletions/duplications have often been associated to PH.

Genetic counselling

Classical PNH is much more frequent in women and likely to be due to *FLNA* mutations. Among carrier women, about half have de novo *FLNA* mutations, whereas the remaining half have inherited mutations. Although maternal transmission is much more likely, father-to-daughter transmission is possible. Given that germline mosaicism of *FLNA* has never been reported, the recurrence risk (for other children) seems to be very low when a mutation is found in the proband but neither parent is a carrier. Counselling is very difficult when PNH is not related to either *FLNA* or *ARFGEF2*, array-CGH study for the search of copy number variations is advised. The number of known cases of familial PNH unrelated to these genes is extremely low.

Polymicrogyria phenotypes and genetics

The term "polymicrogyria" (PMG) defines an excessive number of abnormally small gyri that produce an irregular cortical surface with lumpy aspect [4]. Polymicrogyria can be localized to a single gyrus, involve a portion of one hemisphere, be bilateral and asymmetrical, bilateral and symmetrical or diffuse.

The imaging appearance of polymicrogyria varies with the patient's age. In newborns and young infants, the malformed cortex is very thin with multiple, very small undulations. After myelination, polymicrogyria appears as thickened cortex with irregular cortex-white matter junction [2, 3].

The clinical manifestations of polymicrogyria vary widely, and depend on several factors. The most severe outcomes occur in children with severe microcephaly (<3SD or smaller), abnormal neurological examination (especially spasticity), widespread distribution of polymicrogyria, and additional brain malformations (especially cerebellar hypoplasia). The best outcomes are in individuals who have localised unilateral polymicrogyria without other malformations. Polymicrogyria can affect eloquent cortical areas representing language or primary motor functions, yet these functions can be retained with little or no disability [17].

Polymicrogyria is associated with a wide number of patterns and syndromes and with mutations in several genes (Table 1). Various PMG syndromes have been described, which have been designated according to their lobar topography [5].

Bilateral perisylvian polymicrogyria (BPP) (Figures 3 A and B) is the most frequent form. It is associated with mild to moderate mental retardation, epilepsy, and impaired oromotor skills. Most cases are sporadic but genetic heterogeneity is suggested [5]. BPP, frequently asymmetric and with a striking predisposition for the right hemisphere, has also been reported in children with 22q11.2 deletion [5].

Bilateral frontoparietal polymicrogyria (BFPP) (Figure 3C), has been reported in families with recessive pedigrees and has been associated with mutations of the *GPR56* gene [18]. The imaging characteristics of BFPP resemble those of the cobblestone malformative spectrum (muscle-eye-brain disease and Fukuyama congenital muscular dystrophy) [5].

Some copy-number variants have been associated with polymicrogyria (Table 1), but only deletions in 1p36.3 and 22q11.2 are common [19, 20]. Indeed, when these two loci are excluded, copy number variants seem to be rare. The causal gene has not been identified for any of these loci [20].

Tubulinopathies and related disorders

Classic lissencephaly and polymicrogyria have long been thought of as distinct disorders, but they have been associated with mutations of the same genes (tubulin or tubulin-related genes) that function during the early stages of neuronal proliferation, migration, differentiation, and axonal guidance (i.e., much earlier than the genes usually associated with polymicrogyria and schizencephaly) [21 - 23]. The full range of these malformations vary from extreme lissencephaly with completely absent gyri, total agenesis of the corpus cal-

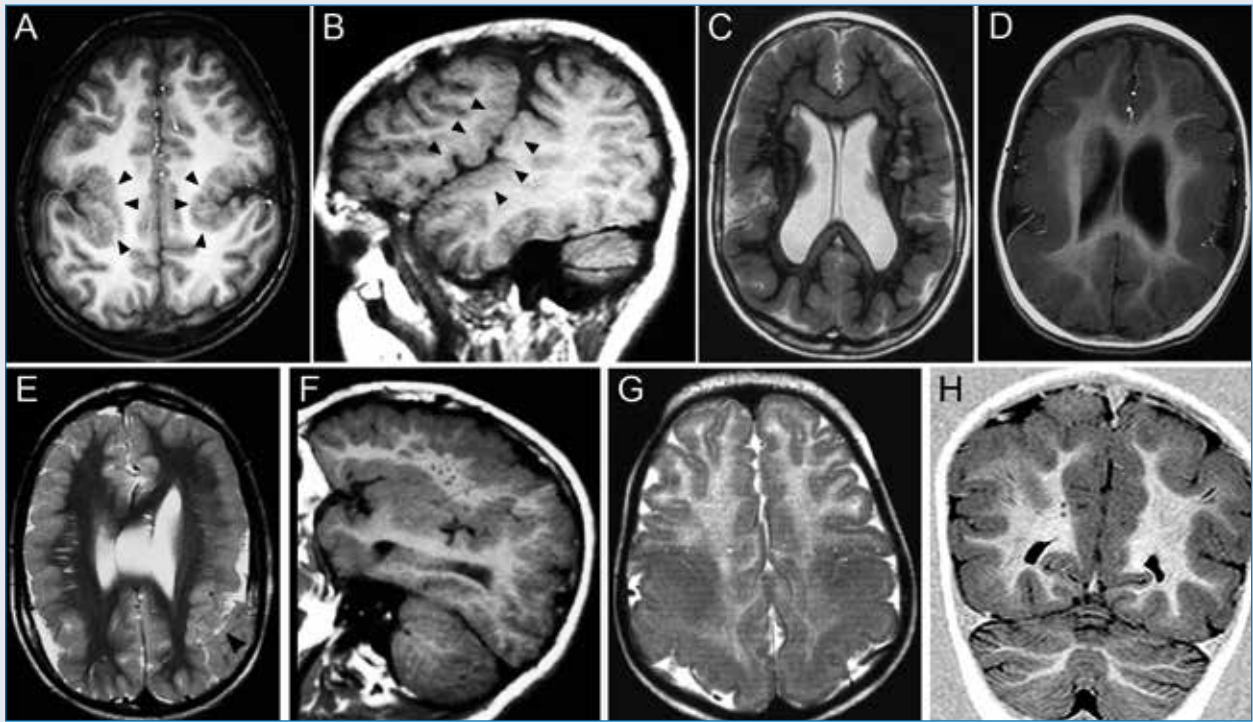


Figure 3: Brain MRI scan in patients with PMG or tubulinopathies. **A)** Axial section and **B)** Sagittal section in a patient with BPP. The sylvian fissures are open and the perisylvian cortex is thickened and irregular (black arrows). Note the abnormally vertical orientation of the sylvian fissure, which appears to be fused with the rolandic fissure. **C)** Axial section. BFPP in a girl with a GPR56 mutation and Lennox-Gastaut Syndrome. **D)** Axial section in a patient with a simplified gyral pattern and TUBA1A mutation. **E)** Axial and **F)** sagittal section in a patient with cortical thickening, diffuse polymicrogyria and TUBB2B mutation. **G)** Axial section in a patient with posterior pachygyria and DYNC1H1 mutation. **H)** Coronal section in a patient with posterior pachygyria, cortical thickening and DYNC1H1 mutation.

losum, and severe cerebellar hypoplasia, to less severe lissencephaly with moderate-to-severe cerebellar hypoplasia, to classic lissencephaly, to an atypical polymicrogyria-like cortical malformation with cerebellar hypoplasia (**Figure 3 D - H**). By definition, tubulinopathies are always genetic. Investigators have identified nine genes (*KIF2A*, *KIF5C*, *TUBA1A*, *TUBA8*, *TUBB*, *TUBB2B*, *TUBB3*, *TUBG1* and *DYNC1H1*; **Table 1**), but we expect additional genes to be reported in the near future. Findings from functional studies suggest that abnormal brain development in tubulinopathies results from a dominant negative effect of heterozygous missense mutations (in the absence of loss-of-function mutations) on the regulation of microtubule-dependent mitotic processes in progenitor cells, and on the trafficking activities of the microtubule-dependent molecular motors *KIF2A*, *KIF5C*, and *DYNC1H1* in postmitotic neuronal cells [22].

Aicardi syndrome is exclusively observed in females, with the exception of two reported males with two X-chromosomes and is thought to be caused by an X-linked gene with lethality in the hemizygous male. However, the genetic basis is still unknown. Clinical features include severe mental retardation, infantile spasms and chorioretinal lacunae. Neuropathological findings are consistent with a neuronal migration disorder and include diffuse unlayered polymicrogyria

with fused molecular layers, agenesis of the corpus callosum and nodular heterotopias in the periventricular or subcortical region. Microgyri are packed and usually not visible at MRI (**Figure 4**) [24]. The specific cause of Aicardi syndrome has not yet been identified.

Megalencephaly, dysplastic megalencephaly and FCD type 2

The term megalencephaly refers to an abnormally large brain that exceeds the mean for age and gender by 2 SD [25]. Megalencephaly has most often been classified simply as a disorder of brain size, but recent studies have shown that megalencephaly with normal cortex by imaging, megalencephaly with polymicrogyria, and dysplastic megalencephaly (including classic hemimegalencephaly) and FCD can all result from mutations of the same genes in the PI3K-AKT pathway [4, 26, 27]. Dysplastic megalencephaly includes all forms of segmental brain overgrowth with cortical dysplasia. The developmental and health complications of megalencephaly differ widely. The most common problems include developmental delay, intellectual disability, and seizures that can start early in life and become intractable. The histological changes are similar if not identical to those in FCD type 2, which is characterised by cortical



Figure 4: T1 weighted sagittal MRI scan of the brain of a 5 months old girl with Aicardi syndrome and intractable infantile spasms. Note the extremely hypoplastic corpus callosum with an extensive area of polymicrogyria involving the frontal lobe. There is a posterior fossa cyst, pachygyria, cortical thickening and *DYNC1H1* mutation.

dyslaminations and dysmorphic neurons without (type 2a) or with (type 2b) balloon cells, blurred junctions between grey and white matter, and increased heterotopic neurons in white matter [28]. The highly focal and variable nature of FCD type 2b, and the pathological resemblance to tubers in tuberous sclerosis, led to the hypothesis that somatic mosaic mutations of genes that encode proteins in the mTOR pathway, which includes *TSC1* and *TSC2* that cause tuberous sclerosis, were implicated in FCD [29]. This hypothesis has been in part confirmed by recent studies documenting pathogenic germline and somatic mosaic mutations in the mTOR gene or in other genes belonging to the mTOR pathway in the dysplastic tissue of FCD type 2a and 2b [30, 31]. In almost all patients with FCD type 2, the lesion is detected after onset of focal epilepsy. A growing number of syndromes and genes have been associated with megalencephaly, especially with more severe phenotypes [32]. Megalencephaly without cortical malformations occurs in benign autosomal dominant macrocephaly, a poorly defined disorder. Megalencephaly with polymicrogyria occurs in megalencephaly-capillary malformation syndrome (with mutations of *PIK3CA*) and megalencephaly-polymicrogyria-polydactyly-hydrocephalus syndrome (with mutations of *PIK3R2* or *AKT3*) [33]. Dysplastic megalencephaly most often occurs without syndromic features, and has recently been associated with mosaic mutations of *PIK3CA*, *AKT3*, and *MTOR* [4].

Acknowledgment: We gratefully acknowledge the patients for participating in the research. This work was supported by a grant from the European Union Seventh Framework Programme FP7/2007-2013 under the project DESIRE (grant agreement n°602531) and the European Research Projects on Rare Diseases (E-Rare-2, TUBGENCODEV, 11-027).

References

1. Gleason JG, Walsh CA. Neuronal migration disorders: from genetic diseases to developmental mechanisms. *Trends Neurosci* 2000; 23: 352-359
2. Guerrini R, Dobyns W, Barkovich A. Abnormal development of the human cerebral cortex: genetics, functional consequences and treatment options. *Trends Neurosci* 2008; 31: 154-162
3. Guerrini R, Dobyns WB. Malformations of cortical development: clinical features and genetic causes. *Lancet Neurol* 2014; 13: 710-726
4. Lee JH, Huynh M, Silhavy JL et al. De novo somatic mutations in components of the PI3K-AKT3-MTOR pathway cause hemimegalencephaly. *Nat Genet* 2012; 44: 941-945
5. Barkovich AJ, Guerrini R, Kuzniecky RI et al. A developmental and genetic classification for malformations of cortical development: update 2012. *Brain* 2012; 135: 1348-1369
6. Guerrini R, Parrini E. Neuronal migration disorders. *Neurobiol Dis* 2010; 38: 154-166
7. Cardoso C, Leventer RJ, Dowling JJ et al. Clinical and molecular basis of classical lissencephaly: Mutations in the *LIS1* gene (*PAFAH1B1*). *Hum*

- Mutat* 2002; 19: 4-15
8. Matsumoto N, Leventer RJ, Kuc JA et al. Mutation analysis of the DCX gene and genotype/phenotype correlation in subcortical band heterotopia. *Eur J Hum Genet* 2001; 9: 5-12
 9. Mei D, Lewis R, Parrini E et al. High frequency of genomic deletions and duplication in the LIS1 gene in lissencephaly: implications for molecular diagnosis. *J Med Genet* 2008; 45: 355-361
 10. Gleeson JG, Minnerath S, Kuzniecky RI et al. Somatic and germline mosaic mutations in the doublecortin gene are associated with variable phenotypes. *Am J Hum Genet* 2000; 67: 574-581
 11. Guerrini R, Moro F, Andermann E et al. Nonsyndromic mental retardation and cryptogenic epilepsy in women with doublecortin gene mutations. *Ann Neurol* 2003; 54: 30-37
 12. Dobyns WB, Guerrini R, Leventer RL. Malformations of cortical development. In: Swaiman KF, Ashwal S, Ferriero DM, Schor NF (eds): *Swaiman's Pediatric Neurology: Principles and Practice*, 5th ed. Edinburgh: Elsevier Saunders, 2012: 202-231
 13. Parrini E, Ramazzotti A, Dobyns WB et al. Periventricular heterotopia: phenotypic heterogeneity and correlation with Filamin A mutations. *Brain* 2006; 129: 1892-1906
 14. Guerrini R, Mei D, Sisodiya S et al. Germline and mosaic mutations of FLN1 in men with periventricular heterotopia. *Neurology* 2004; 63: 51-56
 15. Sheen VL, Ganesh VS, Topcu M et al. Mutations in ARFGEF2 implicate vesicle trafficking in neural progenitor proliferation and migration in the human cerebral cortex. *Nat Genet* 2004; 36: 69-76
 16. Conti V, Carabalona A, Pallesi-Pocachard E et al. Periventricular heterotopia in 6q terminal deletion syndrome: role of the C6orf70 gene. *Brain* 2013; 136: 3378-3394
 17. Guerrini R, Barba C. Malformations of cortical development and aberrant cortical networks: epileptogenesis and functional organization. *J Clin Neurophysiol* 2010; 27: 372-379
 18. Piao X, Hill RS, Bodell A et al. G protein-coupled receptor-dependent development of human frontal cortex. *Science* 2004; 303: 2033-2036
 19. Dobyns WB, Mirzaa G, Christian SL et al. Consistent chromosome abnormalities identify novel polymicrogyria loci in 1p36.3, 2p16.1-p23.1, 4q21.21-q22.1, 6q26-q27, and 21q2. *Am J Med Genet A* 2008; 146A: 1637-1654
 20. Robin NH, Taylor CJ, McDonald-McGinn DM et al. Polymicrogyria and deletion 22q11.2 syndrome: window to the etiology of a common cortical malformation. *Am J Med Genet A* 2006; 140: 2416-2425
 21. Jaglin XH, Poirier K, Saillour Y et al. Mutations in the beta-tubulin gene TUBB2B result in asymmetrical polymicrogyria. *Nat Genet* 2009; 41: 746-752
 22. Poirier K, Lebrun N, Broix L et al. Mutations in TUBG1, DYNC1H1, KIF5C and KIF2A cause malformations of cortical development and microcephaly. *Nat Genet* 2013; 45: 639-647
 23. Cushion TD, Dobyns WB, Mullins JG et al. Overlapping cortical malformations and mutations in TUBB2B and TUBA1A. *Brain* 2013; 136: 536-548
 24. Sutton VR, Van den Veyver IB. Aicardi syndrome. In: Pagon RA, Adam MP, Ardinger HH et al. (eds): *GeneReviews*® [Internet]. Seattle (WA): University of Washington, 2006; 1993-2015
 25. DeMyer W. Megalencephaly: types, clinical syndromes, and management. *Pediatr Neurol* 1986; 2: 321-328
 26. Poduri A, Evrony GD, Cai X et al. Somatic activation of AKT3 causes hemispheric developmental brain malformations. *Neuron* 2012; 74: 41-48
 27. Rivière JB, Mirzaa GM, O'Roak BJ et al. and the Finding of Rare Disease Genes (FORGE) Canada Consortium. De novo germline and postzygotic mutations in AKT3, PIK3R2 and PIK3CA cause a spectrum of related megalencephaly syndromes. *Nat Genet* 2012; 44: 934-940
 28. Blümcke I, Thom M, Aronica E et al. The clinicopathologic spectrum of focal cortical dysplasias: a consensus classification proposed by an ad hoc Task Force of the ILAE Diagnostic Methods Commission. *Epilepsia* 2011; 52: 158-174
 29. Crino PB. Focal brain malformations: seizures, signaling, sequencing. *Epilepsia* 2009; 50 (Suppl 9): 3-8
 30. D'Gama AM, Geng Y, Couto JA et al. Mammalian target of rapamycin pathway mutations cause hemimegalencephaly and focal cortical dysplasia. *Ann Neurol* 2015; 77: 720-725
 31. Lim JS, Kim WI, Kang HC et al. Brain somatic mutations in MTOR cause focal cortical dysplasia type II leading to intractable epilepsy. *Nat Med* 2015; 21: 395-400
 32. Mirzaa G, Ashwal S, Dobyns WB. Disorders of brain size. In: Swaiman KF, Ashwal S, Ferriero DF, Schor NF (eds): *Swaiman's Pediatric Neurology: Principles and Practice*, 5th ed. Edinburgh: Elsevier Saunders, 2012; 173-201
 33. Mirzaa GM, Conway RL, Gripp KW et al. Megalencephaly-capillary malformation (MCAP) and megalencephaly-polydactyly-polymicrogyria-hydrocephalus (MPPH) syndromes: two closely related disorders of brain overgrowth and abnormal brain and body morphogenesis. *Am J Med Genet A* 2012; 158A: 269-291

Address for correspondence:
Professor Renzo Guerrini, MD
Pediatric Neurology Unit and Laboratories,
Children's Hospital A. Meyer - University of Florence
Viale Pieraccini 24,
I 50139 Firenze
Tel. 00390555662573
Fax 00390555662329
renzo.guerrini@meyer.it