

Organisation and information

Swiss League Against Epilepsy
Telephone 043 488 67 77
info@epi.ch
www.epi.ch

Venue

Spitalzentrum Biel | Centre hospitalier Bienne
Conference room
Vogelsang 84
2501 Biel / Bienne

Arrival and parking facilities

By car

A limited number of chargeable parking spaces are available for visitors at the hospital.

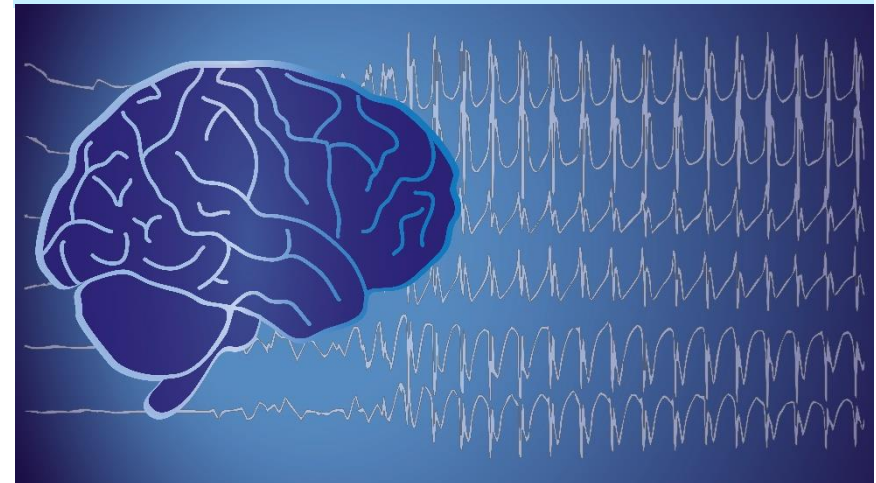
By public transport

Bus lines 5 and 6 run directly from Biel/Bienne railway station to the Centre hospitalier. Both lines run every 15 minutes.

The funicular between Biel/Bienne and Leubringen runs every 10 minutes during the week. From the intermediate station at Beaumont you can reach the Centre hospitalier in no time.

Sponsors: Angelini Pharma Group, BIAL S.A., Desitin Pharma GmbH, Eisai Pharma AG, Jazz Pharmaceuticals, LivaNova Switzerland AG, Neuraxpharm Switzerland AG, Sandoz Pharmaceuticals AG, UCB-Pharma AG, UNEEG medical

Professional event | Hybrid format
Thursday, 9 November 2023, 3 pm to 5 pm
Spitalzentrum Biel | Centre hospitalier Bienne



Epilepsy: a chronic disease

Swiss League Against Epilepsy in collaboration with
Spitalzentrum Biel | Centre hospitalier Bienne

Registration if possible by 2 November 2023

Please register online, by e-mail or by fax:

- www.epi.ch/fach
- E-mail info@epi.ch
- Fax 043 488 67 78

- I wish to attend the event in person.
- I wish to participate via video. I understand I will receive the link at least 48 hours before the event by e-mail.

Title _____

First name, Last name _____

Company / Organisation _____

Profession, Role _____

Street, House no. _____

Postcode, City _____

Tel. _____

E-mail _____

2 credits each: SNS, SGCN

Epilepsy: a chronic disease Thursday, 9 November 2023

Programme

3.00 pm – 3.10 pm	Introduction PD Dr. Frédéric Zubler
3.10 pm – 3.40 pm	Sleep and epilepsy, a reciprocal influence PD Dr. Frédéric Zubler
3.40 pm – 4.10 pm	Sleep, epilepsy and cognition during development Dr. Bigna Bölsterli
4.10 pm – 4.40 pm	Implanted devices for ultra long-term EEG recording Prof. Dr. Maxime Baud
4.40 pm	Aperitif
Approx. 5 pm	End of event

There will be time for questions and discussion at the end of each presentation.

Participation is free of charge.

Programme subject to change.

Picture credits: www.istock.com / drnn